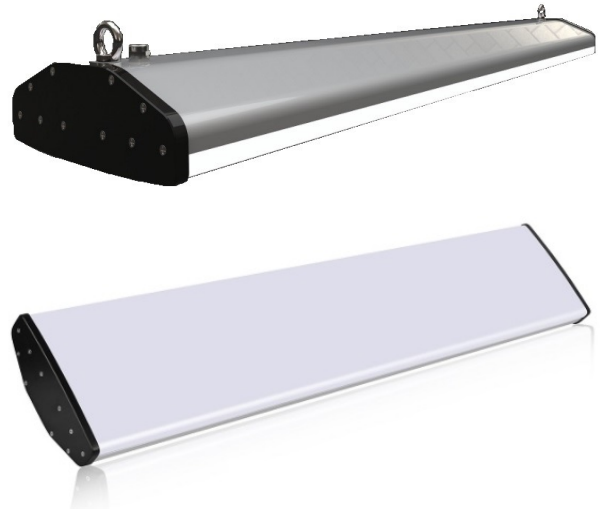




Food Processing High Bay

**150-Watt
IP66
Water/Dust Proof**



LHB-FP-150W

FP Series LED High Bay Fixture

This 150W food and pharmaceutical easy clean high bay fixture (with IP66 rating - vapor and water tight) delivers high lumen output with exceptional 80-85 CRI light while achieving up to 130 lumens per watt. Captive lens design eliminates pixel effect issues common with exposed/open LED high bay fixtures. This fixture is designed to replace either metal halide or fluorescent high bay fixtures.

Aluminum Construction

Surface smooth easy cleaning anti-splinter shield, intelligent control. The entire fixture body, consisting of channel and end plates, is constructed of a lightweight aluminum housing, which provides extremely efficient heat dissipation. The fixture was designed specifically for the food and pharmaceutical industry's.

Electrical

Long-life LED system coupled with electronic driver delivers optimal performance. LED's available in 80-85 CRI. Projected LED life is greater than 50,000 hours. Fixture is UL listed for the US and Canada. Electronic drivers are available for 120- 277V and 347/480V applications.

Finish

Unpainted aluminum construction enhances heat dissipation and provides protection against contaminants and oxidation.

Optics

Precision designed optics deliver even illumination. General and aisle distribution ensures superior performance to key areas within an application. The captive lens design eliminates the pixeling effect that is an issue with "open" LED fixtures.

Performance

The LHB-FP-150W luminaire offers:

- Greater than 130 Lumens/Watt
- CRI 80
- THD <10%
- PF >99
- Projected LED life is greater than 50,000 hours.

LED modules and drivers are offered with a standard 5-year warranty based on performance under normal conditions (consult warranty for details).

Mounting

Standard fixture can be suspended with aircraft cable or chain, or pendant mounted. NOTE: safety chain by others is recommended for applications that may subject the fixture to possible impact.

Compliance

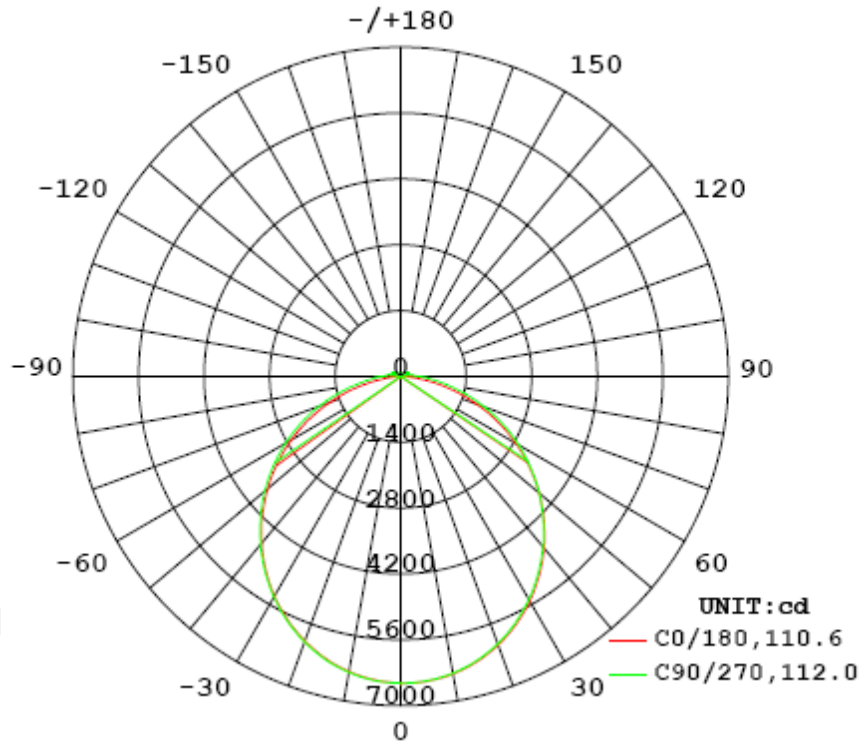
This fixture is ETL listed and IP66 rated for wet locations and -35°C to +50°C ambient environments. DLC certified and RoHS compliant. LED modules comply with IESNA LM-79 and LM-80 standards.



Truex Lighting

Truex Lighting, a division of Truex, LLC

Luminous Intensity Distribution



	C0/180	C45/225	C90/270	C135/315	AVG.
Beam Angle (50% I _{max}):	110.6	111.7	112.0	111.7	111.5
Field Angle (10% I _{max}):	159.2	164.2	168.9	164.1	164.1

Luminous Intensity (cd) Distribution Data

C \ Y	0°	22.5°	45°	67.5°	90°	112.5°	135°	157.5°
0.0°	6520	6520	6520	6520	6520	6520	6520	6520
5.0°	6477	6479	6479	6481	6486	6490	6494	6498
10.0°	6373	6375	6376	6381	6387	6396	6405	6413
15.0°	6210	6211	6214	6217	6227	6241	6255	6267
20.0°	5990	5992	5993	5996	6009	6025	6047	6063
25.0°	5717	5719	5720	5723	5735	5757	5784	5803
30.0°	5396	5399	5400	5403	5416	5441	5471	5493
35.0°	5029	5036	5038	5041	5057	5082	5114	5136
40.0°	4624	4633	4639	4646	4661	4688	4719	4740
45.0°	4185	4200	4211	4220	4239	4263	4290	4307
50.0°	3716	3736	3755	3772	3793	3815	3835	3843
55.0°	3221	3248	3277	3303	3326	3343	3355	3350
60.0°	2701	2737	2782	2818	2844	2857	2855	2835
65.0°	2166	2212	2273	2320	2352	2359	2341	2303
70.0°	1616	1676	1755	1819	1856	1854	1817	1758
75.0°	1072	1146	1249	1332	1372	1360	1302	1216
80.0°	566	654	785	892	940	914	826	708
85.0°	158	268	435	569	615	582	459	298
90.0°	4	92	240	358	406	365	250	98
95.0°	2	29	180	268	305	272	183	41
100.0°	2	31	54	133	227	163	3	27
105.0°	3	43	125	3	18	3	89	42
110.0°	2	41	121	194	132	158	122	40
115.0°	2	37	112	182	208	183	113	37
120.0°	3	33	103	164	186	165	103	33
125.0°	3	29	91	145	164	146	92	29
130.0°	3	25	80	126	143	127	81	25
135.0°	4	21	68	108	122	108	69	21
140.0°	4	17	57	90	103	91	57	17
145.0°	5	13	46	74	84	74	46	13
150.0°	6	7	35	58	66	58	36	9
155.0°	7	7	25	42	49	43	26	7
160.0°	7	8	17	29	33	29	17	7
165.0°	7	7	8	16	19	16	8	7
170.0°	7	7	7	7	7	7	7	7
175.0°	7	7	7	7	6	7	7	7
180.0°	6	6	6	6	6	6	6	6

Luminous Intensity (cd) Distribution Data (cont.)

C Y	180°	202.5°	225°	247.5°	270°	292.5°	315°	337.5°
0.0°	6520	6520	6520	6520	6520	6520	6520	6520
5.0°	6501	6501	6500	6497	6494	6490	6486	6481
10.0°	6420	6420	6419	6414	6407	6399	6391	6382
15.0°	6278	6279	6277	6269	6258	6247	6235	6223
20.0°	6076	6079	6076	6064	6050	6036	6023	6008
25.0°	5820	5824	5820	5805	5786	5771	5757	5739
30.0°	5512	5518	5514	5495	5473	5456	5443	5424
35.0°	5157	5166	5162	5141	5119	5100	5084	5063
40.0°	4760	4771	4771	4751	4726	4708	4689	4664
45.0°	4326	4341	4345	4328	4303	4284	4262	4231
50.0°	3856	3879	3889	3879	3857	3834	3807	3769
55.0°	3360	3389	3412	3407	3392	3365	3329	3282
60.0°	2838	2875	2909	2918	2904	2874	2831	2772
65.0°	2295	2343	2393	2415	2408	2374	2316	2245
70.0°	1739	1799	1866	1906	1907	1869	1797	1708
75.0°	1192	1265	1353	1407	1417	1373	1290	1185
80.0°	663	751	871	956	980	927	817	685
85.0°	221	325	480	596	631	575	444	280
90.0°	18	100	249	361	398	348	229	84
95.0°	1	32	170	254	283	246	161	22
100.0°	2	23	35	207	252	201	32	22
105.0°	2	41	30	2	2	2	39	37
110.0°	2	41	116	80	50	85	110	37
115.0°	2	39	110	176	197	171	104	35
120.0°	2	36	102	159	178	155	96	32
125.0°	3	33	92	143	158	139	87	30
130.0°	3	30	82	125	139	122	78	27
135.0°	3	26	71	107	120	105	69	24
140.0°	4	21	60	91	102	91	59	22
145.0°	4	15	47	74	85	76	52	20
150.0°	4	4	35	57	68	63	44	19
155.0°	5	6	22	42	52	50	37	18
160.0°	5	5	9	27	36	37	29	16
165.0°	5	5	5	13	22	23	19	5
170.0°	6	5	5	5	5	5	5	6
175.0°	6	6	6	5	6	5	6	6
180.0°	6	6	6	6	6	6	6	6

Zonal Lumen Density Measurement

Deg	Flux (lm)	%	Deg	Flux (lm)	%
0-5	155.5	0.81	0-5	155.5	0.81
5-10	461.0	2.41	0-10	616.5	3.22
10-15	749.9	3.91	0-15	1366.4	7.13
15-20	1011.8	5.29	0-20	2378.2	12.42
20-25	1237.6	6.46	0-25	3615.8	18.88
25-30	1419.9	7.41	0-30	5035.7	26.29
30-35	1553.2	8.11	0-35	6588.9	34.40
35-40	1633.9	8.54	0-40	8222.7	42.94
40-45	1660.6	8.67	0-45	9883.3	51.61
45-50	1633.5	8.53	0-50	11516.8	60.14
50-55	1554.1	8.11	0-55	13070.9	68.25
55-60	1425.7	7.44	0-60	14496.5	75.69
60-65	1252.5	6.54	0-65	15749.0	82.23
65-70	1041.5	5.44	0-70	16790.6	87.67
70-75	803.3	4.20	0-75	17593.8	91.87
75-80	556.9	2.90	0-80	18150.7	94.77
80-85	331.1	1.73	0-85	18481.8	96.50
85-90	172.6	0.90	0-90	18654.4	97.40
90-95	100.8	0.53	0-95	18755.2	97.93
95-100	68.0	0.36	0-100	18823.2	98.29
100-105	24.1	0.12	0-105	18847.3	98.41
105-110	27.9	0.15	0-110	18875.1	98.56
110-115	52.2	0.27	0-115	18927.3	98.83
115-120	49.5	0.26	0-120	18976.9	99.09
120-125	42.4	0.22	0-125	19019.3	99.31
125-130	35.3	0.18	0-130	19054.6	99.49
130-135	28.6	0.15	0-135	19083.2	99.64
135-140	22.4	0.12	0-140	19105.6	99.76
140-145	16.9	0.09	0-145	19122.4	99.85
145-150	12.0	0.06	0-150	19134.4	99.91
150-155	8.0	0.04	0-155	19142.3	99.95
155-160	4.9	0.03	0-160	19147.3	99.98
160-165	2.5	0.01	0-165	19149.8	99.99
165-170	1.0	0.01	0-170	19150.9	100.00
170-175	0.4	0.00	0-175	19151.3	100.00
175-180	0.1	0.00	0-180	19151.4	100.00