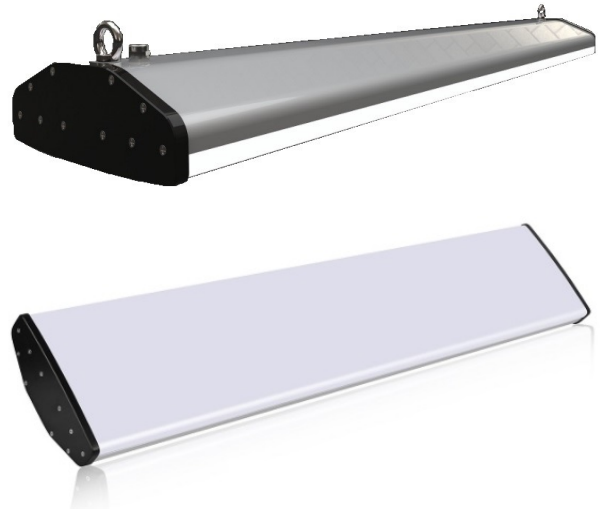




Food Processing High Bay

**200-Watt
IP66
Water/Dust Proof**



LHB-FP-200W

FP Series LED High Bay Fixture

This 200W food and pharmaceutical easy clean high bay fixture (with IP66 rating - vapor and water tight) delivers high lumen output with exceptional 80-85 CRI light while achieving up to 130 lumens per watt. Captive lens design eliminates pixel effect issues common with exposed/open LED high bay fixtures. This fixture is designed to replace either metal halide or fluorescent high bay fixtures.

Aluminum Construction

Surface smooth easy cleaning anti-splinter shield, intelligent control. The entire fixture body, consisting of channel and end plates, is constructed of a lightweight aluminum housing, which provides extremely efficient heat dissipation. The fixture was designed specifically for the food and pharmaceutical industry's.

Electrical

Long-life LED system coupled with electronic driver delivers optimal performance. LED's available in 80-85 CRI. Projected LED life is greater than 50,000 hours. Fixture is UL listed for the US and Canada. Electronic drivers are available for 120- 277V and 347/480V applications.

Finish

Unpainted aluminum construction enhances heat dissipation and provides protection against contaminants and oxidation.

Optics

Precision designed optics deliver even illumination. General and aisle distribution ensures superior performance to key areas within an application. The captive lens design eliminates the pixeling effect that is an issue with "open" LED fixtures.

Performance

The LHB-FP-200W luminaire offers:

- Greater than 130 Lumens/Watt
- CRI 80
- THD <10%
- PF >99
- Projected LED life is greater than 50,000 hours.

LED modules and drivers are offered with a standard 5-year warranty based on performance under normal conditions (consult warranty for details).

Mounting

Standard fixture can be suspended with aircraft cable or chain, or pendant mounted. NOTE: safety chain by others is recommended for applications that may subject the fixture to possible impact.

Compliance

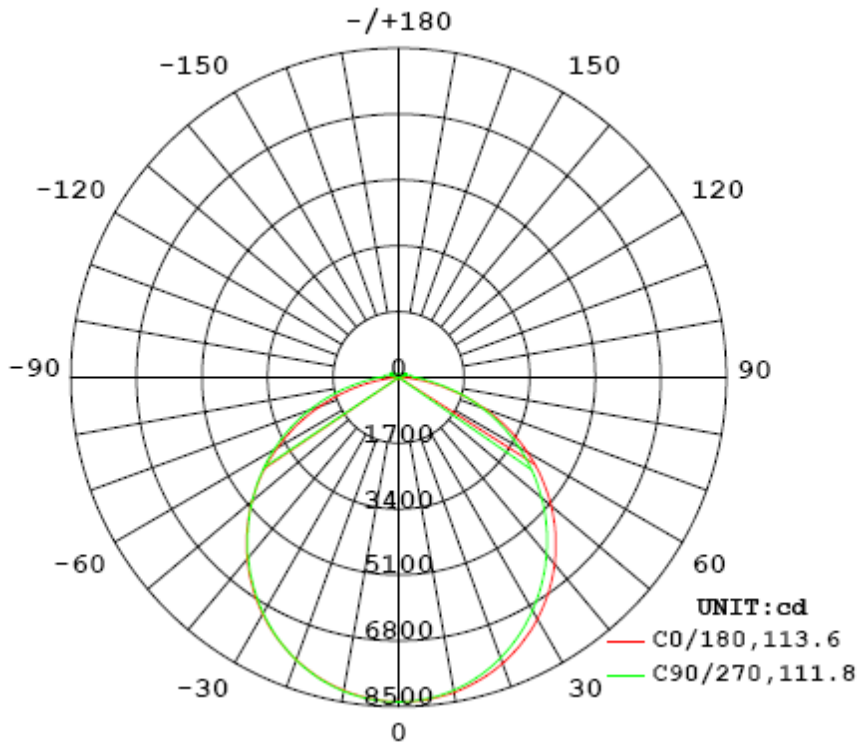
This fixture is ETL listed and IP66 rated for wet locations and -35°C to +50°C ambient environments. DLC Premium and RoHS compliant. LED modules comply with IESNA LM-79 and LM-80 standards.



Truex Lighting

Truex Lighting, a division of Truex, LLC

Luminous Intensity Distribution



	C0/180	C45/225	C90/270	C135/315	AVG.
Beam Angle (50% I _{max}):	113.6	113.1	111.8	113.0	112.9
Field Angle (10% I _{max}):	159.7	163.7	166.8	163.8	163.5

Luminous Intensity (cd) Distribution Data

C \ Y	0°	22.5°	45°	67.5°	90°	112.5°	135°	157.5°
0.0°	8371	8371	8371	8371	8371	8371	8371	8371
5.0°	8323	8327	8330	8334	8338	8343	8345	8348
10.0°	8204	8212	8215	8220	8226	8236	8246	8252
15.0°	8016	8027	8028	8029	8036	8050	8073	8086
20.0°	7760	7772	7769	7762	7767	7791	7827	7849
25.0°	7440	7453	7442	7427	7430	7462	7511	7546
30.0°	7058	7071	7054	7029	7029	7070	7132	7178
35.0°	6614	6631	6608	6577	6575	6620	6695	6750
40.0°	6115	6136	6112	6075	6073	6123	6204	6264
45.0°	5565	5591	5569	5536	5534	5583	5668	5727
50.0°	4967	5003	4990	4962	4963	5012	5089	5142
55.0°	4323	4370	4375	4360	4367	4409	4473	4512
60.0°	3642	3704	3730	3733	3749	3783	3829	3843
65.0°	2923	3005	3060	3087	3108	3135	3158	3140
70.0°	2181	2285	2377	2431	2465	2479	2469	2413
75.0°	1435	1563	1695	1783	1825	1826	1780	1680
80.0°	734	884	1058	1180	1233	1215	1130	982
85.0°	182	342	563	704	765	729	610	406
90.0°	14	114	299	440	496	453	320	130
95.0°	2	54	242	348	389	353	249	92
100.0°	3	48	103	323	360	327	166	40
105.0°	3	53	31	47	142	66	4	54
110.0°	3	55	169	31	4	27	148	57
115.0°	3	55	160	236	184	210	163	58
120.0°	3	51	145	220	252	223	149	55
125.0°	4	47	129	197	225	200	134	50
130.0°	4	42	115	174	199	177	119	45
135.0°	4	37	100	152	172	154	104	40
140.0°	5	33	87	131	148	133	90	35
145.0°	6	28	74	110	125	112	76	30
150.0°	7	8	61	91	102	92	63	25
155.0°	8	8	48	72	81	73	50	8
160.0°	9	14	35	53	60	54	37	11
165.0°	9	11	9	35	40	36	9	12
170.0°	9	9	13	9	9	9	13	9
175.0°	9	8	9	9	10	10	9	9
180.0°	8	8	7	7	6	6	7	8

Luminous Intensity (cd) Distribution Data (cont.)

C Y	180°	202.5°	225°	247.5°	270°	292.5°	315°	337.5°
0.0°	8371	8371	8371	8371	8371	8371	8371	8371
5.0°	8348	8344	8337	8331	8326	8323	8322	8323
10.0°	8254	8244	8228	8211	8199	8195	8198	8203
15.0°	8091	8075	8044	8012	7992	7989	8000	8014
20.0°	7859	7835	7788	7739	7708	7708	7730	7756
25.0°	7561	7527	7463	7396	7357	7361	7396	7431
30.0°	7197	7156	7075	6990	6942	6950	6996	7048
35.0°	6774	6726	6632	6531	6477	6487	6545	6605
40.0°	6290	6240	6133	6023	5964	5978	6040	6109
45.0°	5752	5700	5591	5477	5418	5430	5495	5563
50.0°	5165	5115	5007	4896	4836	4847	4908	4974
55.0°	4528	4485	4388	4286	4229	4236	4289	4343
60.0°	3849	3814	3735	3650	3599	3601	3638	3673
65.0°	3128	3109	3058	2993	2954	2948	2965	2975
70.0°	2381	2381	2366	2331	2304	2288	2276	2255
75.0°	1622	1648	1677	1680	1669	1642	1597	1534
80.0°	905	961	1043	1095	1104	1063	978	867
85.0°	291	384	532	635	666	616	493	325
90.0°	21	113	275	387	423	378	261	102
95.0°	1	87	226	321	353	317	221	84
100.0°	2	31	205	297	327	294	200	46
105.0°	2	44	4	190	284	190	5	45
110.0°	3	46	134	3	3	3	147	44
115.0°	3	45	142	145	46	166	140	44
120.0°	3	41	128	197	223	195	125	41
125.0°	3	36	113	175	198	173	110	36
130.0°	4	31	98	153	173	151	96	30
135.0°	4	25	83	130	148	129	82	26
140.0°	4	18	68	109	124	110	70	21
145.0°	5	12	51	86	101	91	59	18
150.0°	5	5	34	65	79	73	49	17
155.0°	6	5	19	43	57	56	39	16
160.0°	6	6	7	25	37	38	28	13
165.0°	7	6	6	12	19	21	16	6
170.0°	7	7	6	6	6	6	6	7
175.0°	7	7	7	6	6	6	6	7
180.0°	8	8	8	7	7	7	7	8

Zonal Lumen Density Measurement

Deg	Flux (lm)	%
0-5	199.7	0.80
5-10	592.3	2.38
10-15	964.3	3.88
15-20	1303.1	5.23
20-25	1596.9	6.42
25-30	1836.4	7.38
30-35	2013.8	8.09
35-40	2124.1	8.54
40-45	2164.8	8.70
45-50	2135.0	8.58
50-55	2036.0	8.18
55-60	1871.1	7.52
60-65	1645.4	6.61
65-70	1367.0	5.49
70-75	1049.4	4.22
75-80	717.0	2.88
80-85	409.6	1.65
85-90	201.0	0.80
90-95	125.7	0.51
95-100	104.0	0.42
100-105	68.8	0.27
105-110	24.7	0.10
110-115	39.6	0.16
115-120	62.6	0.25
120-125	56.1	0.23
125-130	46.7	0.19
130-135	37.9	0.15
135-140	29.9	0.12
140-145	22.7	0.09
145-150	16.3	0.07
150-155	10.7	0.04
155-160	6.7	0.03
160-165	3.6	0.01
165-170	1.4	0.01
170-175	0.6	0.00
175-180	0.2	0.00

Deg	Flux (lm)	%
0-5	199.7	0.80
0-10	792.0	3.18
0-15	1756.3	7.06
0-20	3059.3	12.29
0-25	4656.3	18.71
0-30	6492.6	26.09
0-35	8506.4	34.18
0-40	10630.5	42.72
0-45	12795.3	51.42
0-50	14930.3	60.00
0-55	16966.2	68.18
0-60	18837.4	75.70
0-65	20482.7	82.31
0-70	21849.7	87.80
0-75	22899.2	92.02
0-80	23616.1	94.90
0-85	24025.8	96.55
0-90	24226.8	97.35
0-95	24352.5	97.86
0-100	24456.5	98.28
0-105	24525.4	98.55
0-110	24550.0	98.65
0-115	24589.7	98.81
0-120	24652.2	99.06
0-125	24708.3	99.29
0-130	24755.1	99.48
0-135	24793.0	99.63
0-140	24822.9	99.75
0-145	24845.5	99.84
0-150	24861.9	99.91
0-155	24872.6	99.95
0-160	24879.3	99.98
0-165	24882.9	99.99
0-170	24884.3	100.00
0-175	24884.9	100.00
0-180	24885.0	100.00