



LHB Series LED High Bay Fixture

This 130W high bay fixture (with IP65 rating - vapor and water tight) delivers high lumen output with exceptional 82+CRI light while achieving 143 lumens per watt. Captive lens design eliminates pixel effect issues common with exposed/open LED high bay fixtures. This fixture is designed to replace either metal halide or fluorescent high bay fixtures.

Aluminum Construction

The entire fixture body, consisting of channel and end plates, is constructed of a lightweight aluminum which acts as a fixture wide heat sink designed for efficient operation in maximum heat environments. The fixture construction includes stiffening brackets and slide rails to create a strong, clean finished frame.

Electrical

Long-life LED system coupled with electronic driver delivers optimal performance. LED's available in 82+ CRI, 5000k. Projected LED life is greater than 100,000 hours. Fixture is cULus listed. Electronic drivers are available for 120- 277V and 347/480V applications.

Finish

Unpainted aluminum construction provides protection against contaminants and oxidation.

Optics

Precision designed optics deliver even illumination. General and aisle distribution ensures superior performance to key areas within an application. The captive lens design eliminates the pixeling effect that is an issue with "open" LED fixtures.



IP65 LED High Bay 130-Watt Water/Dust Proof



Performance

- The LHB luminaire offers >140 Lumens/Watt; CRI >80; THD <10%; PF >99.
- Projected LED life is greater than 100,000 hours. Fixture is standard with long life drivers and LED modules by Samsung.
- LED modules and drivers are offered with a standard 5-year warranty based on performance under normal conditions (consult warranty for details).

Mounting

Standard fixture can be suspended with aircraft cable or chain, or pendant mounted. NOTE: safety chain by others is recommended for applications that may subject the fixture to possible impact.

Compliance

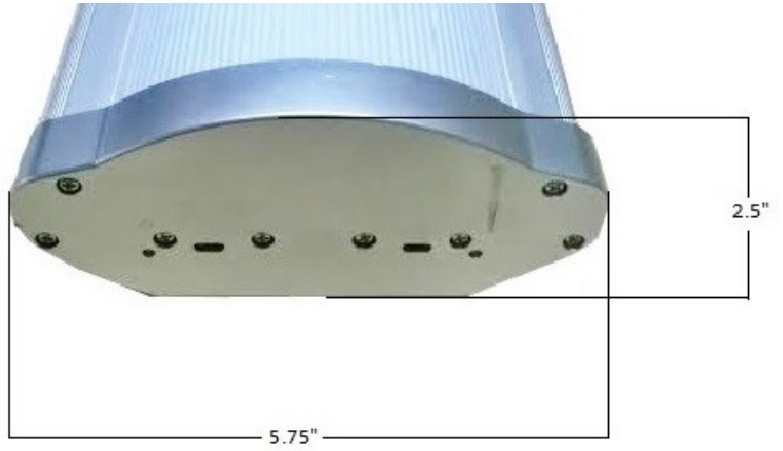
This fixture is UL listed and IP65 rated for wet locations and -40°C to +40°C ambient environments. DLC Premium and RoHS compliant. LED modules comply with IESNA LM-79 and LM-80 standards.

Truex Lighting

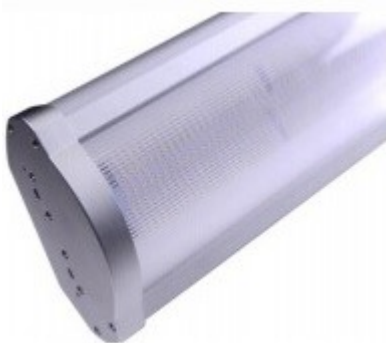
Truex Lighting, a division of Truex, LLC



LHB1-4-130



Approximate fixture weight – 16.5 U.S. Pounds (7.5 kg)



The fixture body consists of channel and end plates and is constructed of a lightweight aluminum heat sink.

The LHB is constructed of lightweight aluminum heat sink designed to perform in maximum heat environments.



The fixture construction includes stiffening brackets and slide rails to create a strong, clean finished frame.



Truex Lighting

Truex Lighting, a division of Truex, LLC