



Truex Lighting
Industrial & Commercial Lighting

All Products Brochure 2023



Truex Lighting has designed and manufactured extreme quality LED and fluorescent lighting products since 2004.

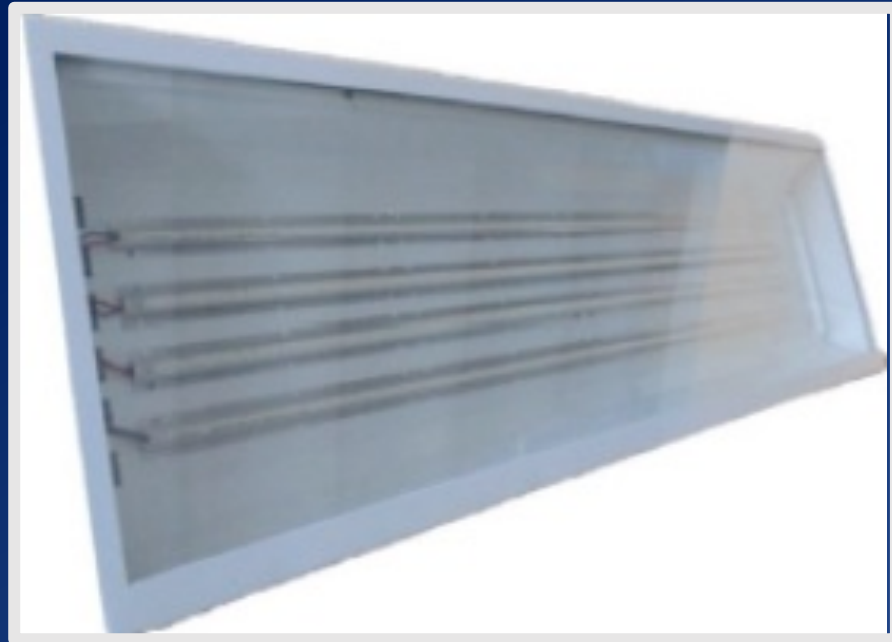
Today, serving the industrial and commercial lighting markets is our sole focus. Our product line is unique, diverse, and filled with products designed to be contractor friendly and fairly priced without sacrificing quality.

You will find Truex products in manufacturing, warehousing, retail and refining facilities of many of the world's largest corporations.

Celebrating 19 Years!

Classified

Hazardous Location	4-12
Explosion Proof	13-21
High Bay	22-31
Vapor Tight	32-35
General Area	36-45



HAZARDOUS LOCATION

Class I, Division 2, Groups A, B, C, D

Class II, Division 1, Groups E, F, G

Class II, Division 2, Groups E, F, G

Class III

Our classified product line, which incorporates the hazardous location and explosion-proof product categories, is one of the four primary elements that make up our industrial line. We offer a complete line of high quality, diversified LED and fluorescent hazardous location fixtures that fit the majority of applications ranging from paint shop to refinery environments.

Hazardous Location: Low Bay / Area Light



This linear classified low bay or area light fixture consists of products ranging from 20-watts to 80-watts.

The fixtures are typically used for low bay and general area lighting in both interior and exterior environments.



CLASSIFICATIONS:

- Class I, Division 2, Group A, B, C, D
- Class II, Division 1, Group E, F, G
- Class II, Division 2, Group E, F, G
- Class III



Model Numbers:

- HLHLB-20W-UNV
20-watt / 2,800 lms / 2-ft.
- HLHLB-40W-UNV
40-watt / 5,600 lms / 2-ft.
- HLHLB-60W-UNV
60-watt / 8,400 lms / 2-ft.
- HLHLB-80W-UNV
80-watt / 11,200 lms / 2-ft.

Hazardous Location: Full Metallic Body



Hazardous location fixture designed for applications requiring metallic fixtures.

Typical applications include chemical plants, water treatment, paper mills, machining areas and coal and dust storage areas.

Fixture housing is constructed of industrial grade aluminum with clear diffuser lens.



CLASSIFICATIONS:

- Class 1, Division 2, Groups A, B, C, D
- UL 844 Hazardous Locations
- UL 924 Emergency Lighting
- UL 1598A Marine Outside Type



Model Numbers:

- HL3-4-2-LED-40W-UNV
40-watt / 4,400 lms / 2-ft.
- HL3-4-2-LED-80W-UNV
80-watt / 8,800 lms / 4-ft.
- HL3-4-2-LED-120W-UNV
120-watt / 13,200 lms / 4-ft.

Hazardous Location: Non-Metallic Body



Designed for applications requiring corrosion resistant fixtures. Excellent for marine wet and damp locations as fixture is drip-proof.

Typical applications include solvent and cleaning areas, petrochemical facilities, marine facilities, waste treatment plants, and food processing applications.

Housing is non-metallic glass reinforced polyester. Gasket is poured in place and diffuser is high impact acrylic.



CLASSIFICATIONS:

- Class I, Division 2, Group A, B, C, D
- Class II, Division 1, Group F, G



Model Numbers:

- HL1-2-2-LED-40W-UNV
40-watt / 4,400 lms / 2-ft.
- HL1-4-2-LED-80W-UNV
80-watt / 8,800 lms / 4-ft.
- HL1-4-3-LED-120W-UNV
120-watt / 13,200 lms / 4-ft.

Hazardous Location: Traditional Linear High Bay



This hazardous location high bay is designed for applications requiring metallic fixtures.

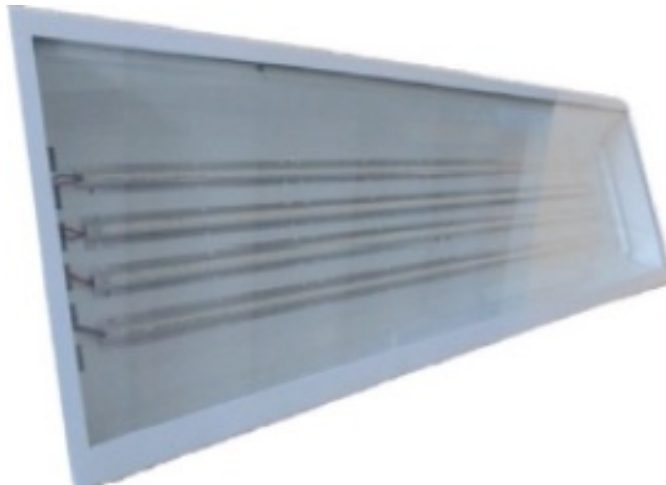
Typical applications include chemical plants, water treatment plants, paper mills, machining areas and coal and dust storage areas.

Fixture housing is constructed of industrial grade steel with clear acrylic diffuser lens.



CLASSIFICATIONS:

- Class I, Division 2, Group A, B, C, D
- Class II, Division 2, Group F, G



Model Numbers:

- HL7-4-2-LED-80W-UNV
80-watt / 8,000 lms / 4-ft.
- HL7-4-3-LED-120W-UNV
120-watt / 13,200 lms / 4-ft.
- HL7-4-4-LED-160W-UNV
160-watt / 17,600 lms / 4-ft.
- HL7-4-6-LED-240W-UNV
240-watt / 26,400 lms / 4-ft.

Hazardous Location: Round Multi-Purpose



This non-linear classified high output flood or high bay fixtures consist of products ranging from 40-watt to 400-watt.

The fixtures can be used as flood lights, high bay lights or standard floor, wall, ceiling, and pendent mounted classified lighting.



CLASSIFICATIONS:

- Class I, Division 2, Group A, B, C, D
- Class II, Division 1, Group E, F, G
- Class II, Division 2, Group E, F, G
- Class III



Model Numbers:

- HLBRFL-40W-UNV
40-watt / 5,600 lms
- HLBRFL-60W-UNV
60-watt / 8,400 lms
- HLBRFL-80W-UNV
80-watt / 11,200 lms
- HLBRFL-100W-UNV
100-watt / 14,000 lms
- HLBRFL-150W-UNV
150-watt / 21,000 lms
- HLBRFL-200W-UNV
200-watt / 28,000 lms
- HLBRFL-250W-UNV
250-watt / 35,000 lms
- HLBRFL-300W-UNV
300-watt / 42,000 lms
- HLBRFL-400W-UNV
400-watt / 56,000 lms

Hazardous Location: Square Multi-Purpose



This non-linear classified high output flood or high bay fixtures consist of products ranging from 40-watt to 400-watt.

The fixtures can be used as flood lights, high bay lights or standard floor/wall /ceiling mounted classified lighting.



CLASSIFICATIONS:

- Class I, Division 2, Group A, B, C, D
- Class II, Division 1, Group E, F, G
- Class II, Division 2, Group E, F, G
- Class III



Model Numbers:

- HLASFL-40W-UNV
40-watt / 5,600 lms
- HLASFL-60W-UNV
60-watt / 8,400 lms
- HLASFL-80W-UNV
80-watt / 11,200 lms
- HLASFL-100-UNV
100-watt / 14,000 lms
- HLASFL-150-UNV
150-watt / 21,000 lms
- HLASFL-200-UNV
200-watt / 28,000 lms
- HLASFL-250-UNV
250-watt / 35,000 lms
- HLASFL-300-UNV
300-watt / 42,000 lms
- HLASFL-400-UNV
400-watt / 56,000 lms

Hazardous Location: Jar Area Light



This non-linear classified area light line consists of products ranging from 10-watt to 40-watt.

The fixtures are typically used for general area lighting and can be used in both interior and exterior environments.



CLASSIFICATIONS:

- Class I, Division 2, Group A, B, C, D
- Class II, Division 1, Group E, F, G
- Class II, Division 2, Group E, F, G
- Class III



Model Numbers:

- HLOJL-10W-UNV
10-watt / 1,400 lms
- HLOJL-20W-UNV
20-watt / 2,800 lms
- HLOJL-30W-UNV
30-watt / 4,200 lms
- HLOJL-40W-UNV
40-watt / 5,600 lms

Hazardous Location: General Area Light



This non-linear classified area light line consists of products ranging from 100-watt to 300-watt.

The fixtures are typically used for general area lighting and can be used in both interior and exterior environments.



CLASSIFICATIONS:

- Class I, Division 2, Group A, B, C, D
- Class II, Division 1, Group E, F, G
- Class II, Division 2, Group E, F, G
- Class III



Model Numbers:

- HLSTAL-100W-UNV
100-watt / 14,000 lms
- HLSTAL-150W-UNV
150-watt / 21,000 lms
- HLSTAL-200W-UNV
200-watt / 28,000 lms
- HLSTAL-300W-UNV
300-watt / 36,000 lms



EXPLOSION PROOF

Class 1, Division 1

Our classified product line, which incorporates the hazardous location and explosion-proof product categories, is one of the four primary elements that make up our industrial line. We offer a complete line of high quality LED explosion proof fixtures that fit the majority of applications, ranging from paint shop to refinery environments.

Explosion Proof: Low Bay / Area Light



This linear classified low bay or area light fixture consists of products are 80-watt or 100-watt.

The fixture is typically used for low bay and general area lighting and can be used in interior or exterior environments.

This fixture can be ordered as an integrated LED, T-LED, or fluorescent.



CLASSIFICATIONS:

- Class I, Division 2, Group A, B, C, D
- Class 1, Division 1 C & D
- Class 2, Division 1 & 2, Groups E,F,G
- Spray paint booth approved
- NEMA 4



Model Numbers:

- EP4-4-2-LED-UNV
80-watt / 8,800 lms / 4-ft.
- EP4-4-2-LED-UNV-10000
90-watt / 10,000 lms / 4-ft.

Explosion Proof : LED Low Bay / Area Light



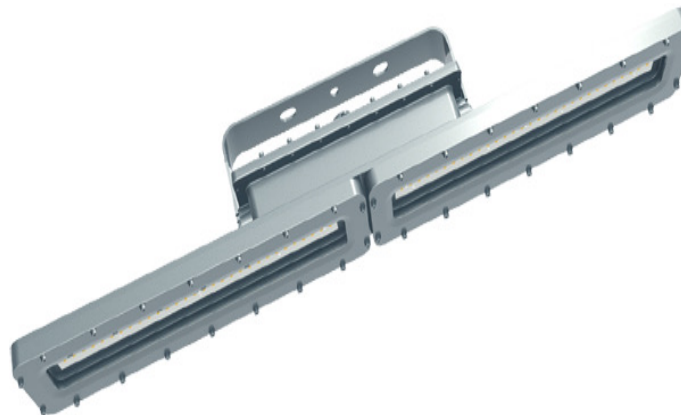
This linear classified low bay or area light fixture consists of products ranging from 20-watt to 120-watt.

The fixtures are typically used for low bay and general area lighting and can be used in both interior and exterior environments.



CLASSIFICATIONS:

- Class I, Division 1, Groups C, D
- Class I, Division 2, Groups A, B, C, D
- Class II, Division 1, Groups E, F, G
- Class II, Division 2, Groups E, F, G
- Class III



Model Numbers:

- EPILB-20W-UNV
20-watt / 2,800 lms / 2-ft.
- EPILB-40W-UNV
40-watt / 5,600 lms / 2-ft.
- EPILB-60W-UNV
60-watt / 8,400 lms / 4-ft.
- EPILB-80W-UNV
80-watt / 11,200 lms / 4-ft.
- EPILB-100W-UNV
100-watt / 14,000 lms / 4-ft.
- EPILB-120W-UNV
120-watt / 16,800 lms / 4-ft.

Explosion Proof : Jar Area Light



This non-linear classified small jar light consists of products ranging from 20-watt to 40-watt.

The fixtures are typically used for general area lighting and can be used in both interior and exterior environments.



CLASSIFICATIONS:

- Class I, Division 1, Groups C, D
- Class I, Division 2, Groups A, B, C, D
- Class II, Division 1, Groups E, F, G
- Class II, Division 2, Groups E, F, G
- Class III



Model Numbers:

- EPGSJL-20W-UNV
20-watt / 2,800 lms
- EPGSJL-30W-UNV
30-watt / 4,200 lms
- EPGSJL-40W-UNV
40-watt / 5,600 lms

Explosion Proof : Squared High Bay / Area Light



This non-linear classified square flood, high bay, or area light line consists of products ranging from 60-watt to 200-watt.

The fixtures are typically used for flood, high bay, and general area lighting and can be used in both interior and exterior environments.



CLASSIFICATIONS:

- Class I, Division 1, Groups C, D
- Class I, Division 2, Groups A, B, C, D
- Class II, Division 1, Groups E, F, G
- Class II, Division 2, Groups E, F, G
- Class III



Model Numbers:

- EPDSFL-20W-UNV
20-watt / 2,800 lms
- EPDSFL-40W-UNV
40-watt / 5,600 lms
- EPDSFL-60W-UNV
60-watt / 8,400 lms
- EPDSFL-80W-UNV
80-watt / 11,200 lms
- EPDSFL-100W-UNV
100-watt / 14,000 lms
- EPDSFL-150W-UNV
150-watt / 21,000 lms
- EPDSFL-200W-UNV
200-watt / 28,000 lms

Explosion Proof : Round Low Bay / Area Light



This non-linear classified round flood, high bay, or area light line consists of products ranging from 40-watt to 250-watt.

The fixtures are typically used for flood, high bay, and general area lighting and can be used in both interior and exterior environments.



CLASSIFICATIONS:

- Class I, Division 1, Groups C, D
- Class I, Division 2, Groups A, B, C, D
- Class II, Division 1, Groups E, F, G
- Class II, Division 2, Groups E, F, G
- Class III



Model Numbers:

- EPCRFL-40W-UNV
40-watt / 5,600 lms
- EPCRFL-60W-UNV
60-watt / 8,400 lms
- EPCRFL-80W-UNV
80-watt / 11,200 lms
- EPCRFL-100W-UNV
100-watt / 14,000 lms
- EPCRFL-150W-UNV
200-watt / 21,000 lms
- EPCRFL-200W-UNV
200-watt / 28,000 lms
- EPCRFL-250W-UNV
250-watt / 35,000 lms

Explosion Proof : Portable Light



The portable light line consists of products ranging from 5-watt to 9-watt.

The fixtures are designed for use in interior or exterior environments.



CLASSIFICATIONS:

- Class I, Division 1, Groups C, D
- Class I, Division 2, Groups A, B, C, D
- Class II, Division 1, Groups E, F, G
- Class II, Division 2, Groups E, F, G
- Class III



Model Numbers:

- EPLPL-5W-UNV
5-watt / 650 lms
- EPLPL-7W-UNV
7-watt / 910 lms
- EPLPL-9W-UNV
9-watt / 1,170 lms

Explosion Proof : Exit Sign



This exit fixtures include from 3-watt and 5-watt models.

The fixtures are designed for use in interior environments.



CLASSIFICATIONS:

- Class I, Division 1, Groups C, D
- Class I, Division 2, Groups A, B, C, D
- Class II, Division 1, Groups E, F, G
- Class II, Division 2, Groups E, F, G
- Class III



Model Numbers:

- EPEX-3W-UNV
3-watt
- EPEX-5W-UNV
5-watt

Explosion Proof : Exit Sign with Bug Lights



This exit emergency combo is a 5-watt exit, emergency battery, and emergency light combination.

The fixture is designed for use in explosion or hazardous location interior environments.



CLASSIFICATIONS:

- Class I, Division 1, Groups C, D
- Class I, Division 2, Groups A, B, C, D
- Class II, Division 1, Groups E, F, G
- Class II, Division 2, Groups E, F, G
- Class III



Model Numbers:

- EPJEXCOMBO-5W-UNV
5-watt



HIGH BAYS

Our LED high bay line is extremely diverse and includes fixtures for a very wide variety of applications. We offer several models with very high efficacy as well as IP ratings ranging from IP65 to IP27. The line also includes high quality economy fixtures. The products are designed to offer a broad lumen output range, industry leading performance, quality and affordability.

High Bay: Utility Linear 6 (Power, Color, Dim. Adjust)



This tunable, linear fixture is a clean, aesthetically pleasing high bay really does it all and is perfect for both industrial and retail environments.

This compact LED high bay incorporates selectable power and CRI (color) flexibility for use in most all applications.

Power is selectable to 90, 130, 180 and 210-watt modes, and CCT is selectable at either 4000K or 5000K.



Additional Features:

- Aluminum housing
- Lens meets LC 5.1 standards
- Suspension, pendant, or surface mounting
- 70% lumen maintained at 100,000 hrs
- Operating temperature is -40°C to 50°C



Model Numbers:

- LHBM6-90/130/180/210W-UNV-D-4K/5K
90, 130, 180, 210-watt
13.6k/20k/25k/30k lms
CCT 4k/5k
2-ft.

High Bay: Utility Linear 5 Series (Dimmable)



The linear 5 Series high bays get you the exactly what you need and are the perfect fit for both industrial or retail environments.

This compact LED high bay series is ideal for one-to-one replacement of HID, T8, and T5HO fluorescent fixtures with mounting heights from 15-ft. to 45-ft.



All 5 Series LED chips are covered by a clear diffuser, softening the emitted light and delivering even illumination.

The captive lens eliminates pixeling effects while still ensuring strong general and aisle light distribution.



Model Numbers:

- LHBM5-90W-UNV-D
90-watt / 12,200 lms / 1-ft.
- LHBM5-130W-UNV-D
130-watt / 18,300 lms / 1-ft.
- LHBM5-180W-UNV-D
180-watt / 24,300 lms / 2-ft.
- LHBM5-210W-UNV-D
210-watt / 30,300 lms / 2-ft.
- LHBM5-260W-UNV-D
260-watt / 36,400 lms / 2-ft.
- LHBM5-360W-UNV-D
360-watt / 49,000 lms / 3.5-ft.
- LHBM5-420W-UNV-D
420-watt / 60,000 lms / 3.5-ft.

High Bay: Linear High Ambient (80°C / 176°F)



This series is the ultimate high bay fixture for high ambient, heat high bay situations.

The fixture is made for ambient environments that range from -22°F to 176°F, and are rated IP66 and IK10.

This fixture delivers 130 lumens per watt output achieving total lumen output ranging of 6,500 to 58,500 lumens.



Additional Features:

- Constructed of high heat conducting aluminum alloy
- Suspended or surface mounting



Model Numbers:

- LHBHTEL-50W-UNV-80C
50-watt / 6,500 lms / 1-ft.
- LHBHTEL-100W-UNV-80C
100-watt / 13,000 lms / 1-ft.
- LHBHTEL-150W-UNV-80C
150-watt / 19,500 lms / 1.5-ft.
- LHBHTEL-200W-UNV-80C
200-watt / 26,000 lms / 2-ft.
- LHBHTEL-300W-UNV-80C
300-watt / 39,000 lms / 2-ft.
- LHBHTEL-450W-UNV-80C
450-watt / 58,500 lms / 3-ft.

High Bay: Linear “Beast” IP65



The “Beast” series is the ultimate in high bay fixtures with high lumen output.

The IP65 group has lumen output as high as 85,000 lumens, or 170 lumens per watt! This fixture series is made for facilities hanging fixtures at high heights and high light output is desired.

The fixtures are rated IP65 (water and dust proof) and do not require reflectors.

Designed to replace either metal halide (400-watt to 1500-watt) or fluorescent (6-lamp to 16-lamp T5HO) high bay fixtures.



Additional Features:

- Exceptional 82 CRI light
- Lumen output rang from 17k to 85k
- Constructed of high heat conducting aluminum alloy
- Suspended, surface, or pendant mounting



Model Numbers:

- LHBHS-HB100W-2-UNV
100-watt / 15,200 lms / 1-ft.
- LHBHS-HB150W-2-UNV
150-watt / 30,400 lms / 1-ft.
- LHBHS-HB200W-2-UNV
200-watt / 38,000 lms / 2-ft.
- LHBHS-HB250W-2-UNV
250-watt / 42,500 lms / 2-ft.
- LHBHS-HB300W-2-UNV
300-watt / 45,600 lms / 3-ft.
- LHBHS-HB360W-2-UNV
360-watt / 54,720 lms / 3-ft.
- LHBHS-HB400W-2-UNV
400-watt / 60,800 lms / 4ft.
- LHBHS-HB500W-2-UNV
500-watt / 76,000 lms / 4-ft.

High Bay: Linear “Beast” IP27



The “Beast” series is the ultimate in high bay fixtures with high lumen output.

The IP27 group has lumen output as high as 120,000 lumens, or 200 lumens per watt! This fixture series is made for facilities hanging fixtures at high heights and high light output is desired.

The fixtures are rated IP27 and do not require reflectors.

Designed to replace either metal halide (400-watt to 1500-watt) or fluorescent (6-lamp to 16-lamp T5HO) high bay fixtures.



Additional Features:

- Exceptional 82 CRI light
- Lumen output rang from 17k to 85k
- Constructed of high heat conducting aluminum alloy
- Suspended, surface, or pendant mounting



Model Numbers:

- LHBHS-HB100W-7-UNV
100-watt / 20,000 lms / 1-ft.
- LHBHS-HB150W-7-UNV
150-watt / 30,000 lms / 1-ft.
- LHBHS-HB200W-7-UNV
200-watt / 40,000 lms / 2-ft.
- LHBHS-HB250W-7-UNV
250-watt / 50,000 lms / 2-ft.
- LHBHS-HB300W-7-UNV
300-watt / 60,000 lms / 3-ft.
- LHBHS-HB360W-7-UNV
400-watt / 80,000 lms / 4-ft.
- LHBHS-HB400W-7-UNV
500-watt / 100,000 lms / 4-ft.
- LHBHS-HB500W-7-UNV
600-watt / 120,000 lms / 4-ft.

High Bay: Linear “Econobay” (Power & Color Adj., Dim.)



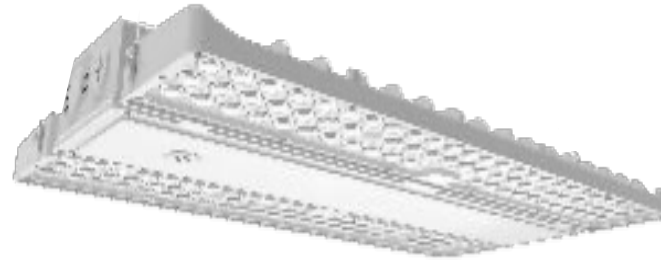
The Econobay series offers unmatched versatility for the price with its power and color adjustment, plus dimming, making it a one-stop-shop for applications where you need a lot of light, not a lot of cost.

This economical compact LED high bay series are ideal for one-to-one replacement of HID, T8, and T5HO fluorescent fixtures with mounting heights from 15-ft. to 40-ft.



Additional Features:

- Aluminum housing
- Lens meets LC 5.1 standards
- Suspension, pendant, or surface mounting
- 70% lumen maintained at 100,000 hrs
- Operating temperature is -40°C to 50°C



Model Numbers:

- LHBX-90/105/130W-UNV-D-4/5K
20,020 max lms, CCT 4/5k, 1.5-ft.
- LHBX-115/130/155W-UNV-D-4/5K
23,250 max lms, CCT 4/5k, 1.5-ft.
- LHBX-155/180/210W-UNV-D-4/5K
31,500 max lms, CCT 4/5k, 1.5-ft.
- LHBX-240/270/310W-UNV-D-4/5K
46,500 max lms, CCT 4/5k, 2-ft.

High Bay: Linear “Econobay” (Non-Adj., Dimmable)



The “Econobay” series high bays are the perfect fit for both industrial and retail environments.

This economical compact LED high bay series are ideal for one-to-one replacement of HID, T8, and T5HO fluorescent fixtures with mounting heights from 15-ft. to 40-ft.



Additional Features:

- Aluminum housing
- Lens meets LC 5.1 standards
- Suspension, pendant, or surface mounting
- 70% lumen maintained at 100,000 hrs
- Operating temperature is -40°C to 50°C



Model Numbers:

- LHBX-105W-UNV-D
105-watt / 14,000 lms / 2-ft.
- LHBX-165W-UNV-D
165-watt / 23,100 lms / 2-ft.
- LHBX-225W-UNV-D
255-watt / 30,800 lms / 4-ft.
- LHBX-300W-UNV-D
300-watt / 42,000 lms / 4-ft.

High Bay: Round High Bay (Power, Color, Dim. Adjust)



This is a power tunable, round high bay fixture series that delivers 120 degrees of light at 12,000 to 35,500 lumen.

The tempered glass lens design allows maximum lumen delivery in any industrial or commercial environment while maintaining its wet location IP65 certification.

Designed to replace either HID or fluorescent high bay fixtures.



Additional Features:

- Precision designed optics deliver even illumination
- Exceptional 82 CRI light



Model Numbers:

- RHBM6-T-45/65/83/97W-UNV-D
45/65/83/97-watt
6,480/8,900/11,000/12,300 lms
CCT 4/5K
- RHBX-T-80/100/120/150W-UNV-D
45/65/83/97-watt
12,000/15,000/18,000/22,500 lms
CCT 4/5K
- RHBX-T-180/200/220/240W-UNV-D
45/65/83/97-watt
26,280/29,200/32,120/35,040 lms
CCT 4/5K

High Bay: NSF Round High Bay (Dimmable)



This series of dimmable, round high bays deliver high lumen output ranging from 12,000 to 30,000 lumen.

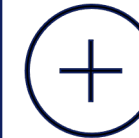
The standard 120 degree light spread guarantees intensity and uniformity.

This series is NSF certified (IP65 & IP69K ratings) featuring a smooth, diamond body design with a polycarbonate lens to insure safe, no-break performance.



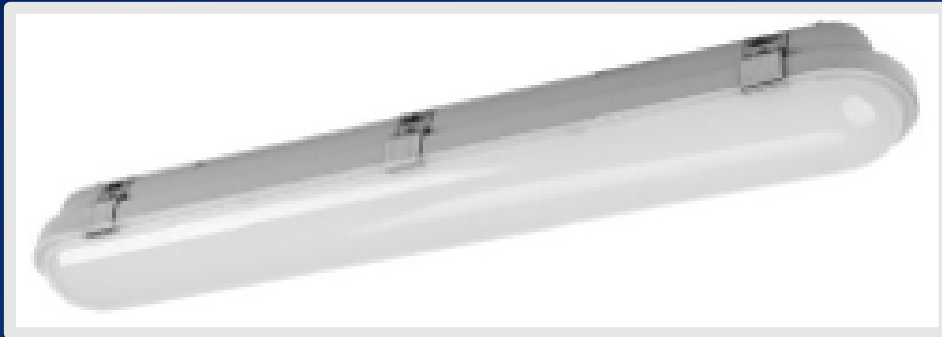
Additional Features:

- Precision designed optics deliver even illumination in every environment
- Exceptional 82 CRI light
- Waterproof & dustproof



Model Numbers:

- RHBX-NSF-150W-UNV-D
150-watt / 22,500 lms
- RHBX-NSF-200W-UNV-D
200-watt / 30,000 lms



VAPOR TIGHT

IP65 linear vapor tight lighting is one of our strengths. Our LED vapor tight line includes traditional style vapor tight fixtures as well as extruded aluminum types which provide excellent heat dissipation. All of our vapor tight models incorporate a sleek modern look that allows the fixture to be used in many different applications.

Vapor Tight: IP65 / IK10 Linear



This vapor tight series is an excellent choice for a highly efficient, multi-use vapor tight solution.

The extruded aluminum body construction acts as an excellent heatsink channeling heat out and away from the LED's.

Coming in both 4-ft. and 8-ft. options, the fixtures are water and dust proof.

The diffuser is high strength polycarbonate, which in combination with the aluminum body, makes the fixture virtually indestructible.



Certifications:

- IP66
- IK10



Model Numbers:

- LVTSHB-4-50W-UNV
60-watt / 6,600 lms / 4-ft.

Other lengths and lumen outputs available, consult factory.

Vapor Tight: “OEM” Linear (IP65/IK10)



The “OEM” series is designed to provide interior lighting for data centers, large generator enclosures, commercial air handling enclosures, portable control centers, and switchgear enclosures.

Manufactured with a 0.5-inch metallic conduit hub containing power wires extending 12 inches from the fixture to allow power and ridged conduit connection.

The fixtures are manufactured for both AC and DC applications.



Certifications:

- IP65
- IK10



Model Numbers:

AC FIXTURE MODELS

LVTSHB-4H-60W-5K-CL-NC-0.5HUB
60-watt / 6,500 lms / 4-ft.

LVTSHB-4H-60W-5K-CL-C-0.5HUB
60-watt / 6,500 lms / 4-ft.

LVTSHB-2H-30W-5K-CL-NC-0.5HUB
30-watt / 3,300 lms / 2-ft.

LVTSHB-2H-30W-5K-CL-C-0.5HUB
30-watt / 3,300 lms / 2-ft.

DC FIXTURE MODELS

LVTSHB-4H-24DC-5K-CL-NC-0.5HUB
24vDC / 6,500 lms / 4-ft.

LVTSHB-2H-24DC-5K-CL-NC-0.5HUB
24vDC / 3,300 lms / 2-ft.

Vapor Tight: IP65 / IK8 Linear (Power & Color Adjust)



This series is a traditional IP65 vapor tight fixture designed to replace either metal halide or fluorescent fixtures in indoor and outdoor environments.

The fixture body and lens are constructed of high impact polycarbonate material, rated at IK8, and has an LM80 life of 140,000 operational hours.



Certifications:

- IP65
- IK8



Model Numbers:

- LVTW-20/25/30W-35/4/5K-UNV
2800/3500/4200 lms
CCT 35/4/5k
2-ft.
- LVTW-34/38/45W-35/4/5K-UNV
4760/5320/6300 lms
CCT 35/4/5k
4-ft.



GENERAL AREA LIGHTING

The Truex line of area lights includes lighting for parking garages, flood and parking lot applications, strips, wall packs and canopy fixtures.

Area: Linear Strip Series (Power & Color Adjust)



This tunable strip fixture is available in 4 ft. and 8 ft. lengths.

The 4- ft. fixtures are 40-watt and CRI tunable to 3000/4000/5000K.

The 8-ft. fixtures are 65-watt and CRI tunable to 3500/4000/5000K. The 8-ft. is also power tunable for 55/60/65-watts.



This versatile fixture has an aluminum body with polycarbonate lens.

It can be suspended or surface mounted in rows or individual fixtures.



Model Numbers:

- LSSW4-40W-UNV-3/4/5K
45-watt / 5,200 lms / 4-ft.
- LSSW8-55/60/65W-UNV-35/4/5K
64-watt, 7,150/6,500/8,320 lms, 8-ft.

Area: Round Parking Garage (Dimmable)



This series is specifically designed for parking garage applications with a light pattern designed for typical parking.

The fixture is also available with general area light pattern in order to be used in parking garage stairwells and general garage security.



This parking garage fixture is available in 30/45/60/90-watt configurations, ranging from 3,600 to 11,600 lumen output.



Model Numbers:

- LCPPG-M3-30W-UNV-D
30-watt / 3,600 lms
- LCPPG-M3-45W-UNV-D
45-watt / 5,000 lms
- LCPPG-M3-60W-UNV-D
60-watt / 7,100 lms
- LCPPG-M3-90W-UNV-D
90-watt / 11,600 lms

Area: Flood Lighting (Dimmable After 60W)



Our line of standard flood lights consist of products ranging from 70-watt (8,900 lumens) to 350-watt (50,000 lumens).

The IP65 rated flood light fixtures have a modular design which allows for easy maintenance.

The LM80 life is 50,000 hours.



The fixture's rugged die-cast aluminum housing offers excellent corrosion resistance and the dark bronze powder coated finish ensures lasting performance with maximum efficacy in harsh environments.



Model Numbers:

- LFLM-45W-UNV
45-watt / 5,650 lms
- LFLM-60W-UNV
60-watt / 7,450 lms
- LFLM-70W-UNV
70-watt / 8,900 lms
- LFLM-70W-UNV-D
70-watt / 8,900 lms
- LFLM-100W-UNV-D
100-watt / 13,300 lms
- LFLM-135W-UNV-D
135-watt / 18,000 lms
- LFLM-200W-UNV-D
200-watt / 26,200 lms
- LFLM-250W-UNV-D
250-watt / 36,000 lms
- LFLM-350W-UNV-D
350-watt / 50,000 lms

Area: No Cut-Off Wall Pack Flood Lighting (Dimmable)



This wall pack series is an LED, traditional look, non-cutoff.

Our highly efficient fixture is complete with a polycarbonate diffuser which is far more break resistant than traditional glass diffusers.

The fixture is available in lumen output configurations ranging from 3,500 lumen to 15,000 lumen.



The fixture's rugged die-cast aluminum housing offers excellent corrosion resistance and the dark bronze powder coated finish ensures lasting performance with maximum efficacy in harsh environments.



Model Numbers:

- LWPM4-27W-UNV-D
27-watt / 3,450 lumen
- LWPM4-45W-UNV-D
45-watt / 5,600 lumen
- LWPM4-62W-UNV-D
62-watt / 7,800 lumen
- LWPM4-90W-UNV-D
90-watt / 11,000 lumen
- LWPM4-115W-UNV-D
115-watt / 14,500 lumen

Area: Full Cut-Off Wall Pack Flood Lighting



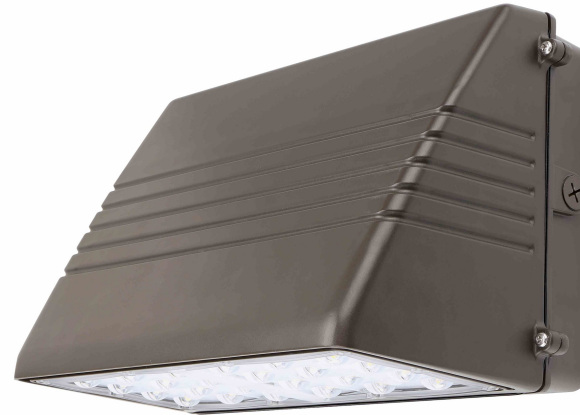
This wall pack series is an LED, traditional look, full cutoff.

Our highly efficient fixture is complete with a polycarbonate diffuser which is far more break resistant than traditional glass diffusers.

The fixture is available in lumen output configurations ranging from 6,450 lumen to 18,000 lumen.



The fixture's rugged die-cast aluminum housing offers excellent corrosion resistance and the dark bronze powder coated finish ensures lasting performance with maximum efficacy in harsh environments.



Model Numbers:

- LWPFCOM-45W-UNV
45-watt / 6,450 lumen
- LWPFCOM-70W-UNV
70-watt / 9,900 lumen
- LWPFCOM-90W-UNV
90-watt / 12,200 lumen
- LWPFCOM-135W-UNV
135-watt / 18,000 lumen

Area: Adjustable Wall Pack



This wall pack series is an adjustable LED wall pack that can be adjusted from 0 to 90 degrees of tilt.

This highly efficient fixture is complete with a polycarbonate diffuser which is far more break resistant than traditional glass diffusers.

The fixture is available in lumen output configurations ranging from 3,600 to 10,500 lumen.



The fixture's rugged die-cast aluminum housing offers excellent corrosion resistance and the dark bronze powder coated finish ensures lasting performance with maximum efficacy in harsh environments.



Model Numbers:

- LWPM-10-FCO-AS-27-UNV
27-watt / 3,600 lumen
- LWPM-10-FCO-AS-40-UNV
40-watt / 5,200 lumen
- LWPM-10-FCO-AS-67-UNV
67-watt / 8,800 lumen
- LWPM-10-FCO-AS-80-UNV
80-watt / 10,500 lumen

Area: Recessed Flat Panel (Power Adj. & Dimmable)



Our recessed flat panel is a back-lit tunable LED fixture designed for use in commercial, industrial and retail environments.

The fixtures are also capable of tunable 3500K/4000K/5000K in light color.



The 2x2 and 2x4 fixtures provide tunable wattage capability providing highly efficient lighting with extreme power savings.



Model Numbers:

- LPL22-20/25/30-35/4/5K-UNV-D
20/25/30 watt
2,660/3,250/3,810 lms
- LPL24-35/40/46-35/4/5K-UNV-D
35/40/46 watt
4,650/5,200/5,842 lms

Area: Wraparound (Power & Color Adjust)



This power and color adjustable LED wraparound fixture is designed for use in commercial, industrial and retail environments.

The fixtures are also capable of tunable 3500K/4000K/5000K in light color.



This fixture has tunable wattage capability providing highly efficient lighting with extreme power savings.



Model Numbers:

- LWAW-30/35/40W-35/4/5K-UNV
30/35/40-watt
4,500/5,250/6,000 lms

Area: Canopy (Dimmable)

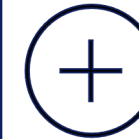


This canopy is a dimmable LED fixture designed for use in commercial, industrial and retail environments.

The fixtures are also capable of tunable 3500K/4000K/5000K in light color.



These fixtures provide excellent coverage at a high efficiency and extreme power savings.



Model Numbers:

- LCPM5-40W-UNV-D
40-watt
5,450 lms
- LCPM5-60W-UNV-D
60-watt
8,000 lms

Contact Us



**5865 South Garnett Road
Tulsa, Oklahoma 74146**



(918) 250-7641



info@truexlighting.com



www.truexlighting.com